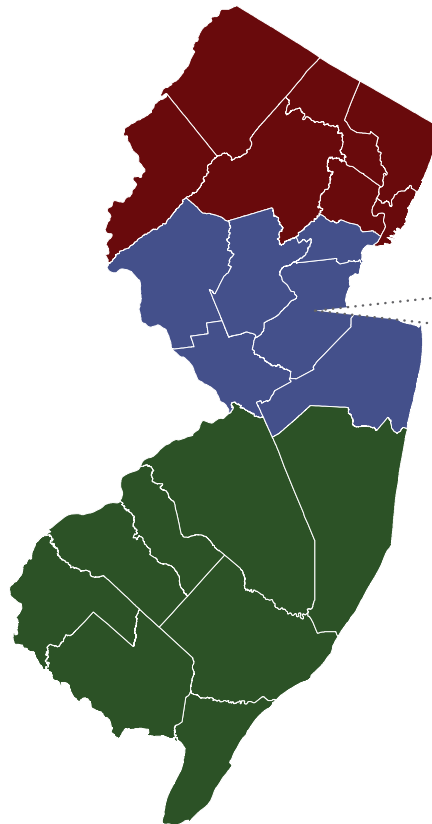


STRONGER TOGETHER

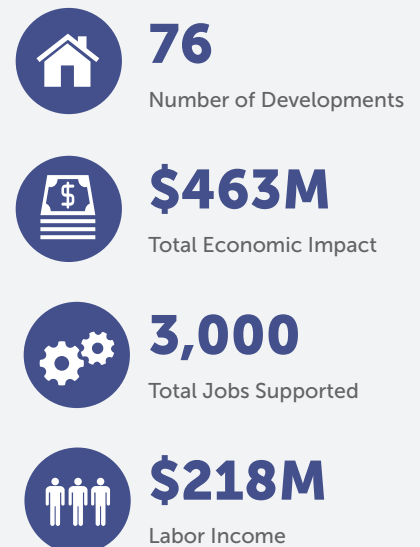
NEW JERSEY COMMUNITY DEVELOPMENT CORPORATIONS (CDCs) HAVE CREATED \$12 BILLION IN ECONOMIC IMPACT FOR THE STATE OF NEW JERSEY SINCE 1989. The Housing and Community Development Network of NJ reported on this investment and its results in "Stronger Together: The \$12 Billion Impact of Community Development Corporations in New Jersey." This report found that NJ's CDCs have produced 82,000 jobs, provided job training for more than 10,500 local residents, contributed \$5.5 billion in worker wages, and generated \$320 million in tax revenue for the state over the past twenty five years. This brief breaks down the compelling data from Stronger Together at the county/counties level where CDCs are improving their communities and investing in the future every day.

► SINCE 1989, **MORE THAN 1,500 DEVELOPMENTS** WERE UNDERTAKEN BY CDCs IN NEW JERSEY INCLUDING **21,000 AFFORDABLE HOMES** AND **OVER 2.5 MILLION SQ. FT. OF COMMERCIAL SPACE.**

- **NORTH JERSEY**
650 DEVELOPMENTS
\$4.2 BILLION
- **CENTRAL JERSEY**
460 DEVELOPMENTS
\$3 BILLION
- **SOUTH JERSEY**
390 DEVELOPMENTS
\$4.8 BILLION



MIDDLESEX COUNTY BY THE NUMBERS



STATEWIDE

**ADDED
82,000
JOBS**

through investments in real estate rehabilitation and new construction.

**CONTRIBUTED
\$5.5
BILLION**

in worker wages and in contracts with New Jersey businesses.

**PROVIDED
JOB TRAINING**

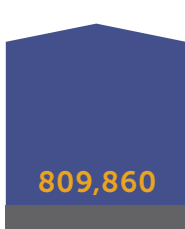
to more than
10,500
local residents

**EMPLOYED
10,000**
permanent
staff members

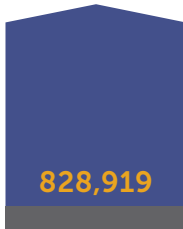
COUNTY SNAPSHOT

\$ MEDIAN INCOME \$79,596

POPULATION CHANGE



2010



2013

↑
2.4%

RENTERS/HOMEOWNERS

33%
RENTERS



67%
HOME OWNERS

RENTERS

FAIR MARKET RENT

\$1,458

HOURLY HOUSING WAGE

\$28.75

POPULATION COST BURDENED

50.0%

HOMEOWNERS

AVERAGE HOME PURCHASE COST

\$321,347

POPULATION COST BURDENED

36.0%

▶ PARTICIPATING CDCs: Allies, Inc., ARC of Middlesex County, Brunswick and Raritan Housing Corp., Collaborative Support Programs of NJ, Domus Corporation, East Brunswick Community Housing Corporation, Fairmount Housing Corporation, Jewish Renaissance Foundation, Lutheran Social Ministries of NJ, Making It Possible to End Homelessness, Metuchen Community Services Corporation, Middlesex Interfaith Partners with the Homeless, Monarch Housing Associates, New Jersey Community Capital, Plainsboro Nonprofit Housing Corp, Tri-City Peoples Corporation, Triple C Housing, VOA Greater New York, Inc